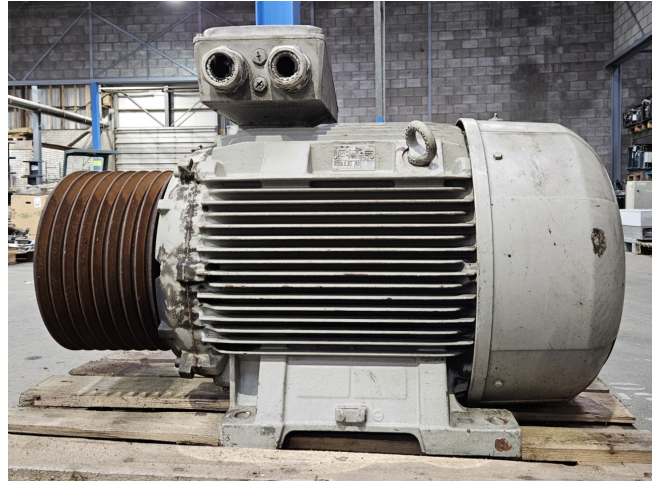


Rotor 6RN280M04E12

Specifications

Marque	Rotor
Type	6RN280M04E12
kW	90
RPM	1485
Size & Weight	1050x530x700 mm (LxWxH) & 574 kg
50 Hz / 60 Hz	50/60 Hz
Stock	1



Description

Used Rotor 6RN280M04E12

Used Rotor 6RN280M04E12 electric motor with the following specifications: 50/60 Hz - 90/104 kW - 1485/1785 RPM.

